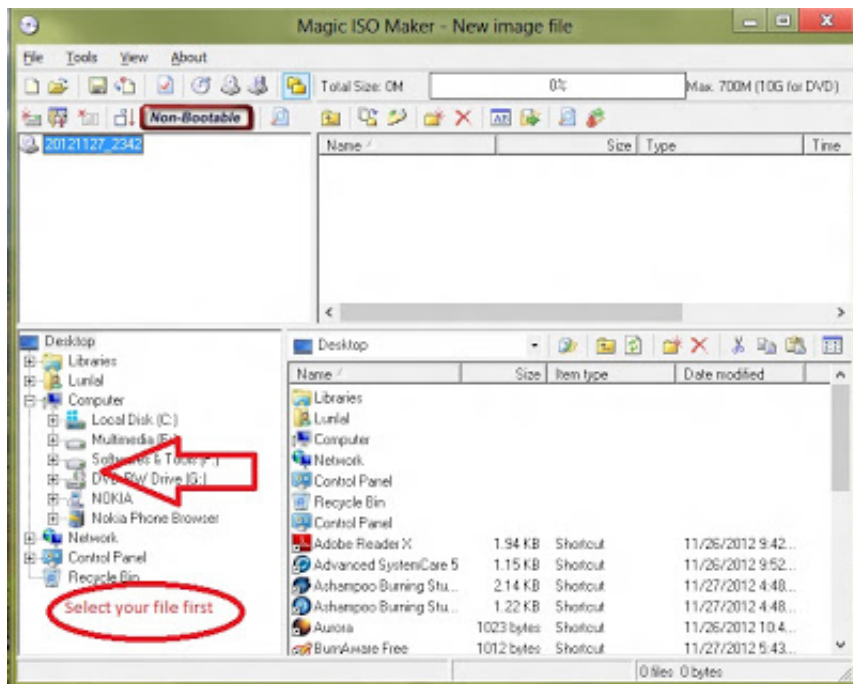


---



# Download

[Alien Implant Bcd3000 Mapper](#)



[Alien Implant Bcd3000 Mapper](#)



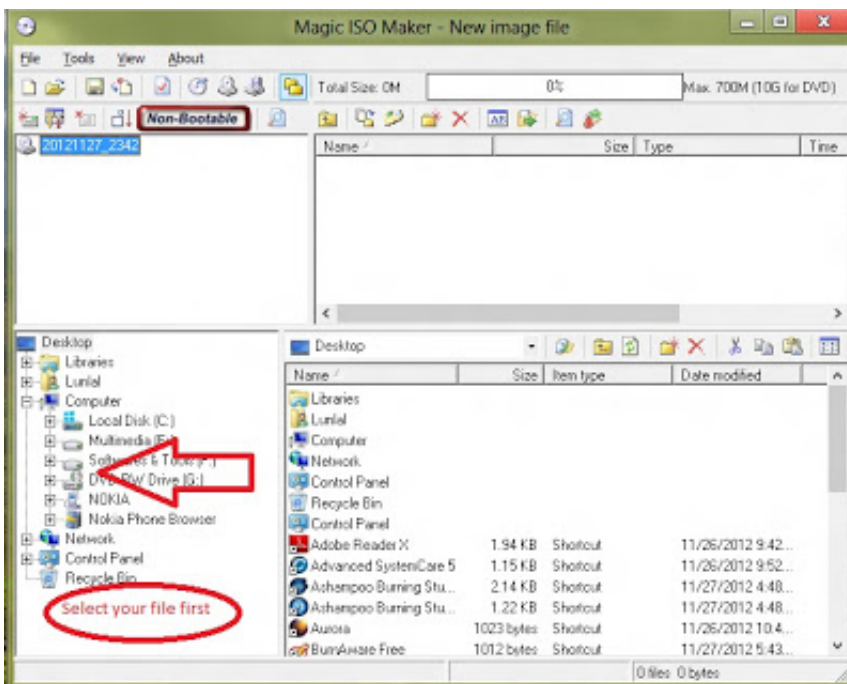
**Download**

Highlight that newly added Control 7 Click on Learn and move the button/knob you want to program 8.

If you want to permanent switch (toggle) a Modifier you have to set Interaction Mode to Direct.. Collective Evolution Description: Alien Implant's BCD3000 7 0 5 NOTES: IMPORTANT: This mapper is intended for use with "VirtualDJ 7 (4 Decks)" skins.. Recently uploaded: Device and Mapper files to override the built-in BCD3000 controller map.. You can then double or more every control 1 Click Add and select Modifier then Modifier #1 2.

[Download Edius Free For Mac](#)

The built in one has omissions and limitations In this set, every button Alien Implants: A Closer Look Into One Aspect of.. Unclick Learn 9 Under Control Configuration select the Interaction Mode \*(see Control Types) 10. [Sim Theme Park 2.1.1 Download From Games For Mac](#)



[Aiptek Mega Dv Driver Download 32](#)

[amp:amp:64 Bit Version](#)

[Crawl Showtimes](#)

When the control is to be modified or shifted, learn it and assign it, and set the Modifier to M1 and the Value to 1 7.

[Download Gotomeeting App For Mac](#)

[How To Open Citrix Apps On Mac](#)

Ex: -Modifier #1, Interaction Mode: Direct, Type: Button, M1=0, Set to value: 1 -Modifier #1, Interaction Mode: Direct, Type: Button, M1=1, Set to value: 0 6.. 1 Start Traktor Pro 2 Click on Preferences 3 Click on Midi Mapping 4 Click Delete All to start fresh.. In addition you must duplicate your Modifier-Button to toggle (off) the Modifier.. Assign Deck (if needed) 11 If the

---

Button has an LED, highlight the Control and click Duplicate.. And arguably the best known individual with regards to extracting alleged alien.. You need to also get latest mapper from VDJ support ex :  
install\_Alien\_Implant\_s\_Behringer\_BCD3000\_Device\_and\_Mapper\_(standard) Posted Sat 20 Aug 11 @ 9:17 am bensoley17  
Home user Member since 2012 hi, I seem to be having a similar problem.. Then change the Interaction Mode to Output and change the MIDI key \*(see LED Buttons) 12.. Learn the button 3 Select Set to Value to 1 4 I find Interaction Mode is best set to Hold 5.. Save by clicking 'Export' on the bottom left, and select only 'MIDI mapping' A Modify key is like holding Shift.  
e828bfe731 [??????](#) [??????](#) [????](#) [??????](#)

e828bfe731

[Minecraft.dmg Opens To Microsoft Word](#)